

Wednesday 7th October 2020

Hannah

To choose an appropriate strategy for a calculation

Mental

Partitioning
 $3000 + 0 = 3000$
 $800 + 4000 = 12000$
 $0 + 500 = 500$
 $60 + 70 = 130$
 $7 + 6 = 13$

Answer:
42643 ✓

Compensating
 $554 + 198 = 652$
 $554 + 200 = 754$
 $754 - 2 = 752$

Answer:
652 ✓

Number bonds
 $0.5 + 0.5 = 1.0$
 $7 + 7 = 14$
 $14 + 0.10 = 14.10$

Number bonds:
 $7 - 3 = 4$
 $0.6 - 0.4 = 0.2$
Answer: 0.6 - 0.4 = 0.2 ✓

Partitioning
 $3000 + 2000 = 5000$
 $800 + 900 = 1700$
 $40 + 90 = 130$
 $7 + 7 = 14$

Answer:
6849 ✓

Compensating
 $5.9 + 4.2 = 10.1$
 $5.10 + 4.2 = 9.12$
 $9.12 - 1 = 8.12$

Answer: 9.11 ✓

Partitioning
 $8 - 6 = 2$
 $0.8 - 0.3 = 0.5$

Answer
2.5

Partitioning
 $10 - 6 = 4$
 $0.5 - 0.9 = -0.4$

Answer
14 ✓

Partitioning
 $3 + 5 + 1 = 9$
 $4 + 2 + 4 = 10$

Answer:
3.4 + 5.3 - 1.4 ✓

This could have been turned into

$10 - 8.76$

$7.5 + 5.23$

$4863 - 798$

$4 + 3.8$

Answer = 7.8

$34.62 - 18.35$

$16.58 + 35.76$

Written

144 You both tried so hard to use mental methods!

Partitioning
 $7 + 0.8 = 7.8$

Tuesday 6th October 2020

To analyse and evaluate texts looking at language, structure and presentation and how these contribute to meaning.
To navigate texts, e.g. using contents and index pages, in order to locate and retrieve information in print and on screen

	The Storm Unicorn
Title	The storm Unicorn
Introduction: ✓ Adjectives ✓ Why is it rare? ✓	It's rare because it has magical qualities. Majestic. Unique. Rare.
Where does it live?	Forests. sleep under bushes. or Curled up amongst ferns. sleeps in daytime
What does it eat?	leaves, grass and other forms of vegetation. Apples, nuts.
What does it look like?	body of a horse. long horn. Horn from middle of head. light colour of purple.
Endangerment/Existence	Almost extinct. Mankind killing them.
Did you know?/ Myth-busters	Storm unicorn in 1673. Man called Dr Dapper.

Good note taking!

Thursday 8th October 2020

To understand how temperature changes.

What happens to a cup of coffee left on Mrs Holland's desk after lunch?

Prediction:

I think that...

Get cold before home time.

It will take about 15 minutes.

Time	Temperature.
1:20pm	63.5 ^o C
1:40pm	44.5 ^o C
2:00pm	35.5 ^o C
2:20pm	30.5 ^o C
2:40pm	27.3 ^o C
3:00pm	24.6 ^o C
Mrs H coffee	24.7 ^o C

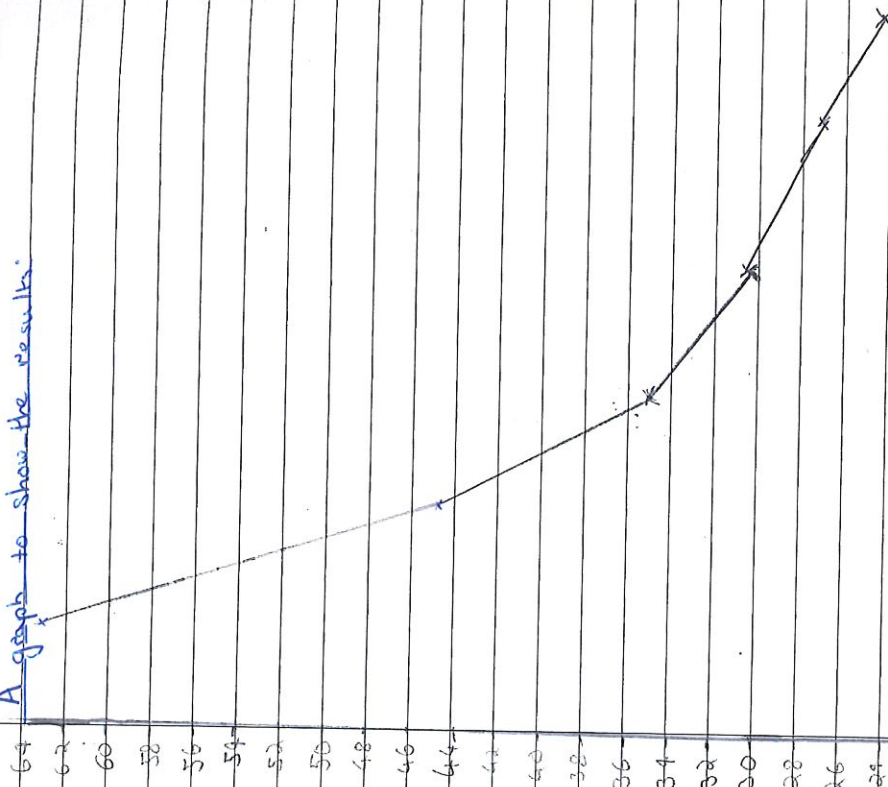
Equipment:

Coffee Mug
boiling water thermometer
milk clock.
Spoon
flask.

Method.

For instant coffee, I got a spoon and put it in and added boiling hot water from boiler. Then add milk and stirred. poured hot coffee from flask into mug at 1:15 or 1:20. then check the temp. Every 20 minutes we will check the temperature of the coffee.

A graph to show the results:



What has happened?

The thermometer has got lower and it has ~~stay~~ stay below the air temperature. I guess slower and it nearly 10°C everytime.

Why do you think this is?

The grist clasp was about 20°C and I think it was because the steam got released. It has been in Boon Air. The cup was cold at the beginning.

What will happen if we left the coffee overnight?

The milk will rise to the top and go a bit green. It would be cold to the top.

Mrs Holland's attitude to coffee temperature.

~~47.7~~ 47.7°C ~~47.7~~

The coffee that I was used to that is still in the glass:

45.5°C